

IMSE OPC Server

FEAUTURES

Easy to Install
Easy to Configure.
Reads Parameter bank
(configuration) from IMSE.
OPC DA V2 and V3 compliant.

SYSTEM REQUIREMENTS

Windows XP, Windows 7,
Windows Server 2003 or 2008
2 MB RAM
Dedicated USB Port
.NET Framework 3.5

ORDERING INFORMATION

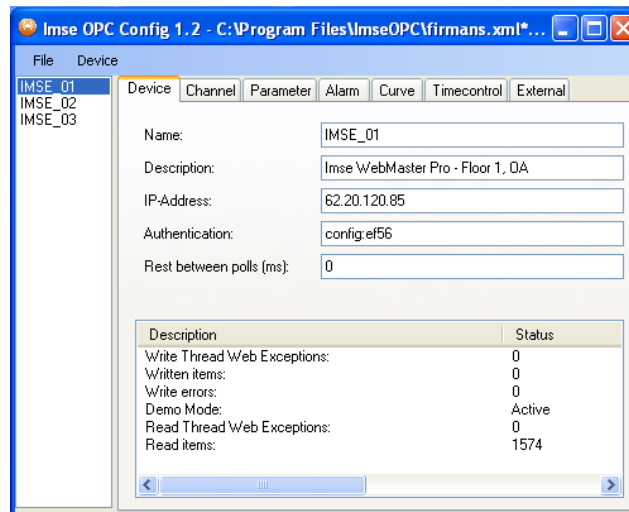
Open System Group AB
order@osg.se

SUPPORT

Open System Group AB
+46 8 556 557 70

DEMO

Available



The IMSE OPC Server seamlessly links customer applications to a Building Management System (BMS) based on the IMSE WebMaster product.

Any application that can act as an OPC Client, such as an HMI or SCADA, can interact with one or several IMSE.

It allows the applications to read and write measured values, set points, digital status, alarms and time channels.

The OPC server configuration tool allows the user to choose what signals to monitor. This reduces the amount communication load the IMSE has to process.

Based on Microsoft Windows technology the Open Process Control (OPC) standard is widely used to exchange data between compliant applications.

IMSE OPC Server is a easy to install and easy to configure OPC server for communicating with IMSE WebMaster and IMSE WebMaster Pro systems from Abelko Innovation.

IMSE is a Web based system that communicates using TCP/IP on a LAN or WAN.

After configuring the IMSE OPC Server, the configured items can be browsed from any application that can act as an OPC Client.

The OPC Server is available as a demo. In demo mode it will run for two hours at the time.

To communicate with a IMSE WebMaster both the computer running the OPC Server and the IMSE have to be connected to a Ethernet network.

Data exchange between OPC Server and OPC Client can be done between separate computers using DCOM although it is preferred that both Server and Client software are run on the same computer.

OSG

Open System Group AB

P.O. Box 635, 13526 TYRESÖ, Sweden

Phone + 46 8 556 557 70. www.osg.se